



CT23BM18

Double DIN Fitting Kit for BMW Vehicles

IN THE KIT

- i. Double DIN Fascia Panel
- ii. Stereo Brackets (R/L)
- iii. Screws (x8)
- iv. Clips (x2)



APPLICATION

Note: Application data is subject to change at any time

BMW 3 Series (F3) 2012 - 2016**

BMW 4 Series (F3) 2012 - 2016**

Note: To correctly install this fitting kit, one of the following interfaces is recommended in order to retain OEM features and relocate the OEM head unit:

For amplified vehicles CTSBM015.2

For non-amplified vehicles CTSBM014.2

RECOMMENDED TOOLS

- Panel Removal Tool
- Screwdriver
- Cutting Tool

FEATURES

- Allows for the installation of a double DIN aftermarket stereo
- Retains OEM climate controls
- Retains ambient ashtray light (if vehicle is equipped)
- Includes mounting brackets and fitting accessories
- Finished in black to match vehicle dashboard

DISCLAIMER

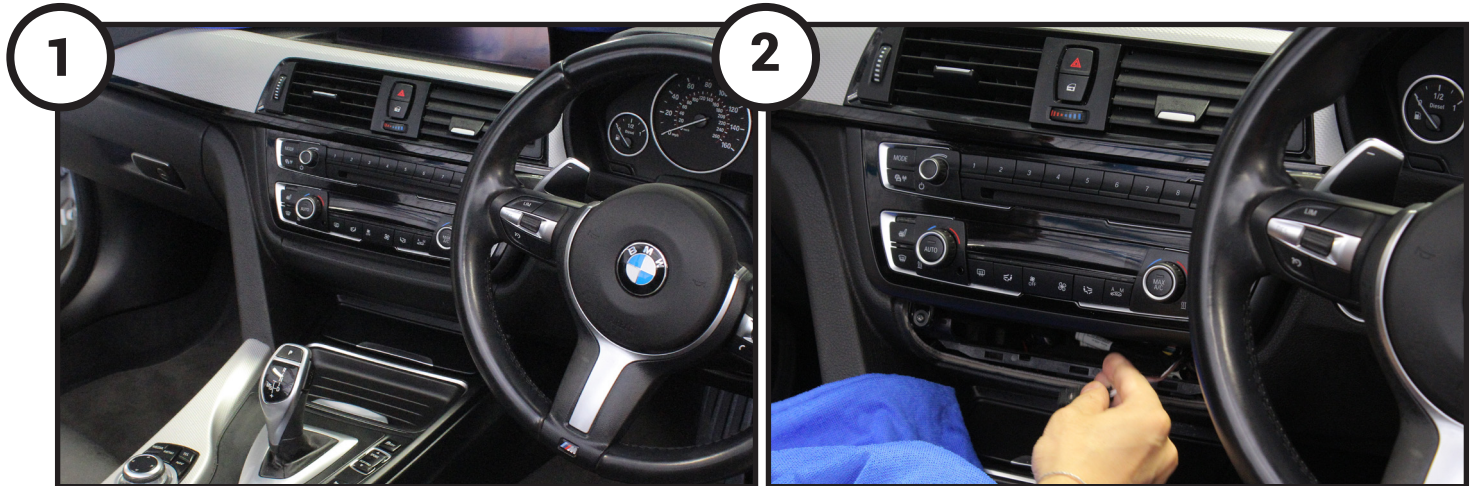
The information provided in this document is subject to change without notice due to manufacturer changes and/or improvements to the product/s. This instruction manual is based on documented data and research. The manufacturer of this product cannot be held responsible for any changes made to the vehicle by the manufacturer or damages that may occur through the installation of this product in accordance with the steps outlined herein.

PRIOR TO INSTALLATION

Read the manual prior to installation. Technical knowledge is necessary for installation. The place of installation must be free of moisture and away from heat sources. Please ensure that the correct tools are using during the installation to avoid damage to the vehicle or product. Connects2 can not be held responsible for the installation of this product.

PLEASE NOTE THAT DASHBOARD MODIFICATION IS REQUIRED IN ORDER TO PROVIDE SPACE FOR THE DOUBLE DIN HEAD UNIT. SEE PAGE 3 FOR MORE DETAILS.

INSTALLATION GUIDE

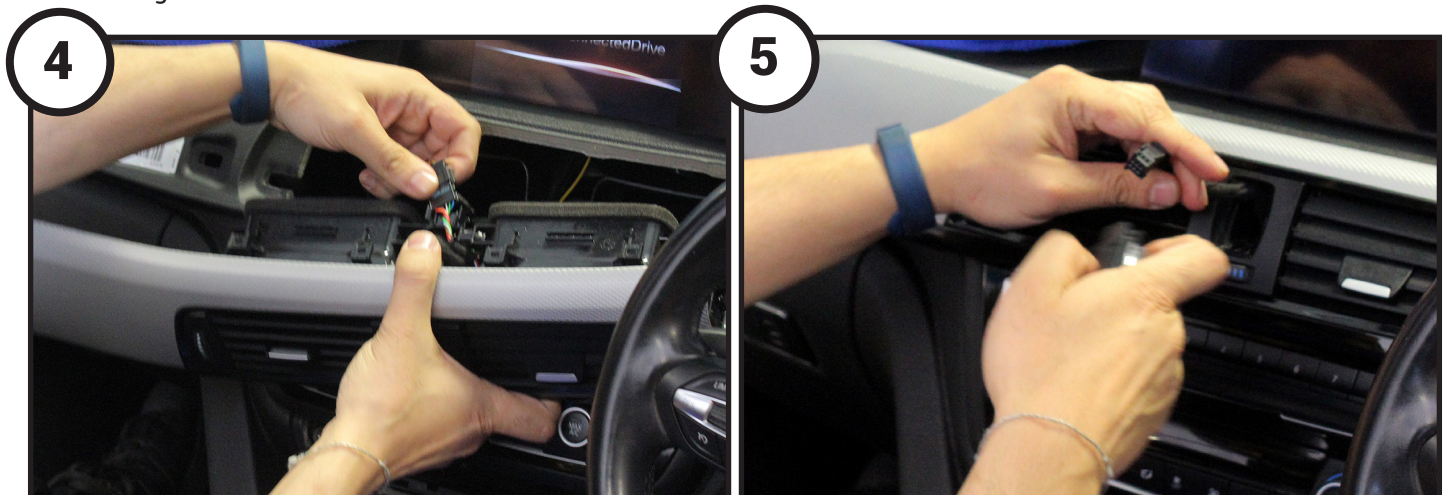


BMW 4 Series OEM Dashboard

Use a panel removal tool to remove the panel below the climate control assembly and disconnect the cable



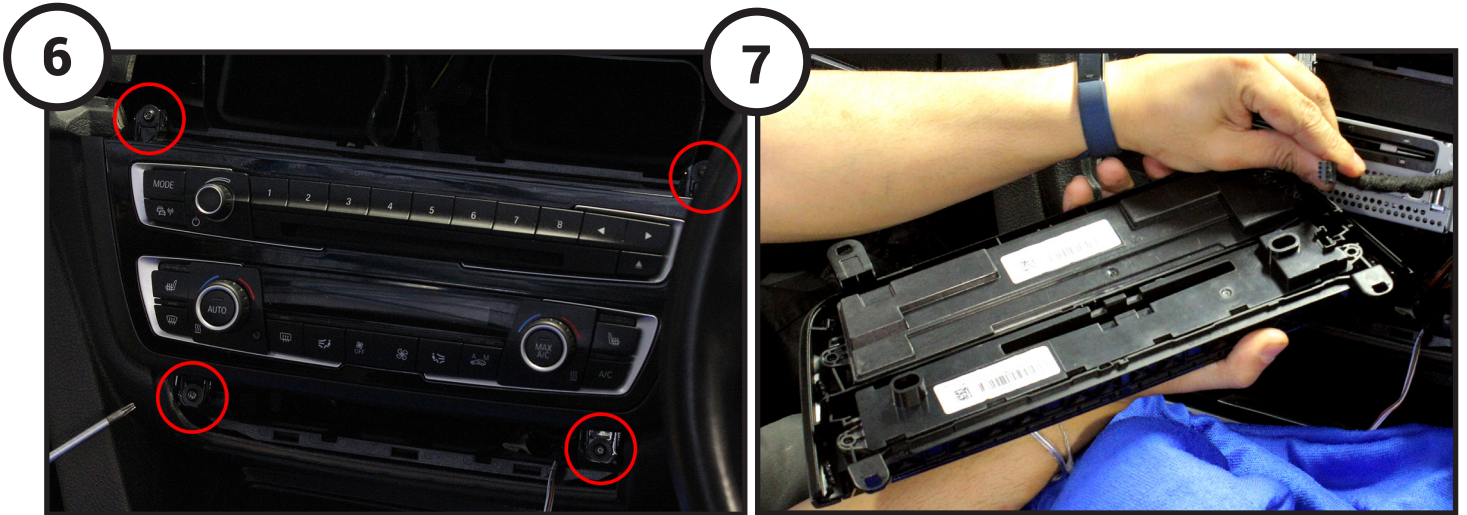
Use a panel removal tool to partially remove the air vent panel/vents, starting from the left hand side of the dashboard and moving to the centre



Once the vent panel is loose, pull it out of the dash enough to disconnect the cable at the back of the panel

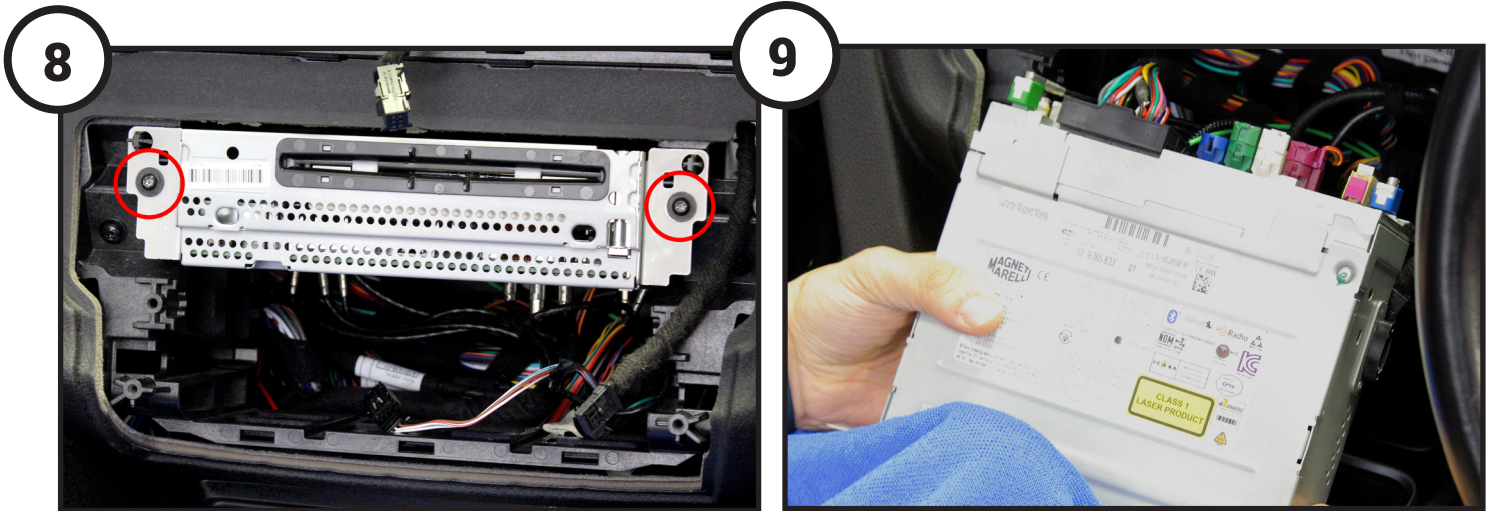
Push the vent panel back into the dash and push the hazard warning button out. Disconnect the button and fully remove the air vent panel/vents

INSTALLATION GUIDE



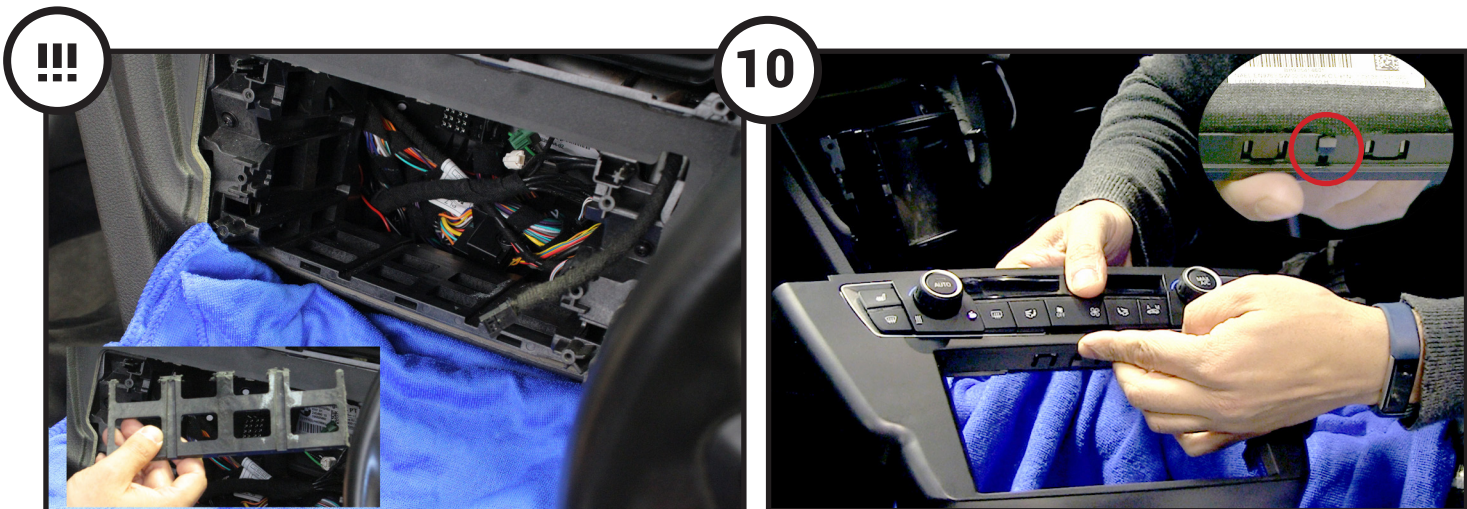
Use a screwdriver to remove the four screws that surround the climate control panel (circled)

Pull out and disconnect the OEM radio button panel



Use a screwdriver to remove the two screws on the right and left sides of the OEM head unit.

Remove the OEM head unit and disconnect all wiring to the unit. At this stage, the OEM head unit should be relocated into a suitable location at the rear of the vehicle.



Use a cutting tool to remove the gridded plastic shelf from the bottom of the head unit cavity. See above image to see removed piece (bottom left) as well as the cavity post-modification.

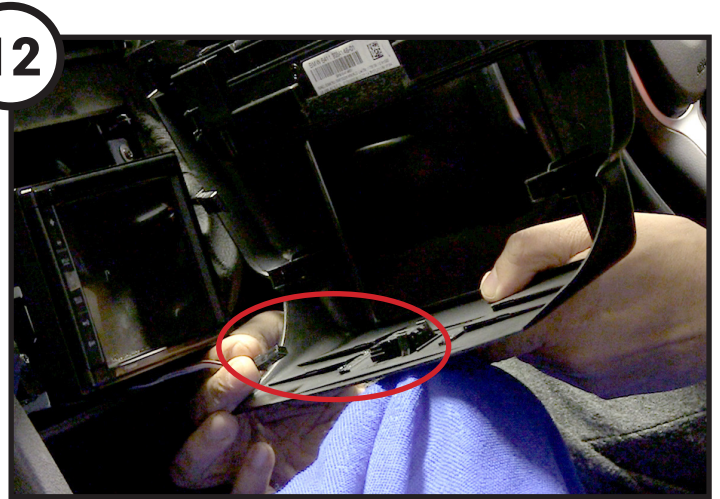
Relocate the climate control button panel into the new double DIN fascia panel, ensuring that the middle clip is lined up for a perfect fit

Need help? Visit support.connects2.com/tickets/technical

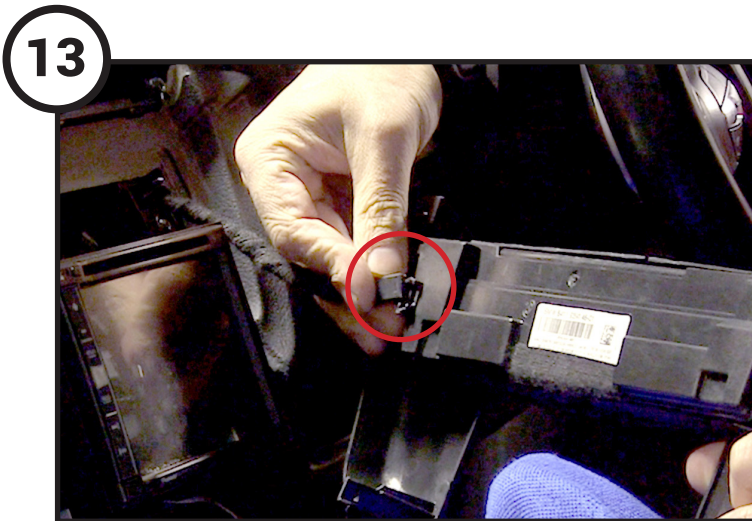
INSTALLATION GUIDE



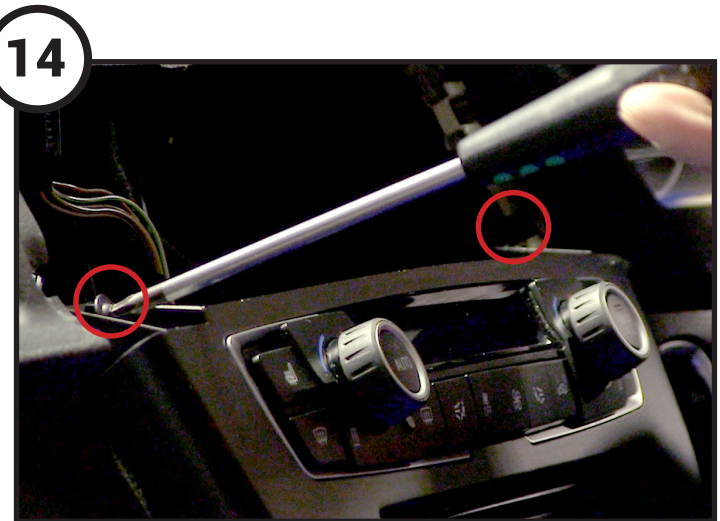
11 Screw the left and right brackets included in the kit onto each side of the aftermarket radio, and screw into the dashboard using the OEM screws removed during Step 6, in the locations circled above.



12 If the OEM panel has an LED located above the ashtray, remove this from the panel and slot it into the housing provided in the new panel to retain the ashtray light.



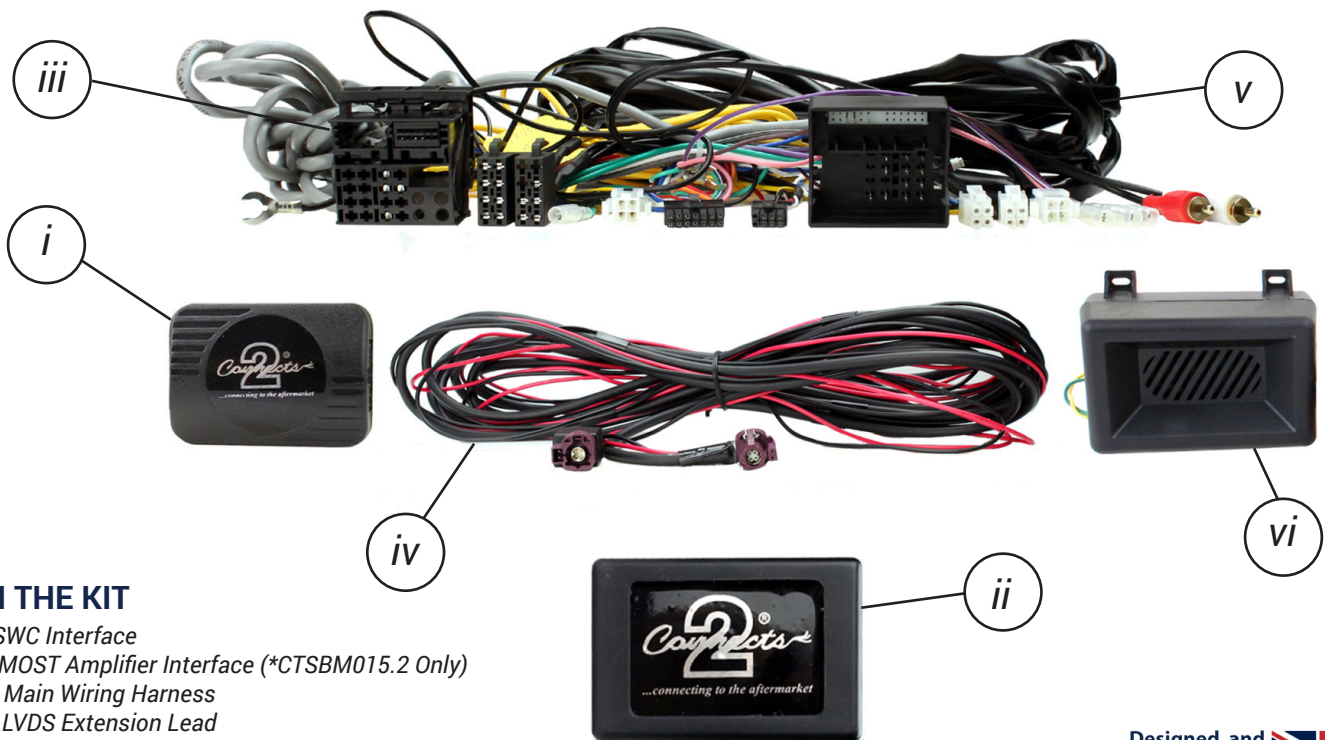
13 Reconnect the climate control button panel and attach the two clips included in the kit to the locations on the back of the double DIN fascia



14 Fit the fascia into place around the stereo, using the clips to guide it into place. Screw into the dash using the OEM screws and locations. Reassemble dash in reverse order of disassembly to complete the installation.



CTSBM014.2/*015.2 Steering Wheel Control Interface for BMW Vehicles



IN THE KIT

- i. SWC Interface
- ii. MOST Amplifier Interface (*CTSBM015.2 Only)
- iii. Main Wiring Harness
- iv. LVDS Extension Lead
- v. Data Extension Lead (4 Pin Molex -> 4 Pin Molex)
- vi. Speaker Box

Designed and
Engineered
in the UK. 

APPLICATION

Note: Application data is subject to change at any time

BMW 3 Series (F3**)	2012 - 2016
BMW 4 Series (F3**)	2012 - 2016

FEATURES

- Retains Factory Steering Wheel Control Functionality
- Retains Phone Button Functionality (if vehicle is equipped)
- Retains OEM MOST Amplified System (*CTSBM015.2 Only)
- Retains Warning Chimes/Parking Sensor Audio (via integrated speaker)
- Retains Voice Commands from SWC (if head unit supports)
- Retains OEM Head Unit for Vehicle Settings via Top Display
- Provides Output Feeds for Park Brake, Speed Pulse, Reverse Gear & Mute
- Updateable via USB (contact supplier for more information)

DISCLAIMER

The information provided in this document is subject to change without notice due to manufacturer changes and/or improvements to the product/s. This instruction manual is based on documented data and research. The manufacturer of this product cannot be held responsible for any changes made to the vehicle by the manufacturer or damages that may occur through the installation of this product in accordance with the steps outlined herein.

PRIOR TO INSTALLATION

Read the whole manual prior to installation. Technical knowledge is necessary for installation. The place of installation must be free of moisture and away from heat sources. Please ensure that the correct tools are using during the installation to avoid damage to the vehicle or product. Connects2 can not be held responsible for the installation of this product.

Before installing the interface, the factory stereo must be removed, disconnected and relocated to a suitable location in the rear of the vehicle. To do this, please consult the vehicle owner's manual/handbook or contact a fitting professional.

WIRING KEY

IN WIRING HARNESS

Purple	Right Rear Speaker +
Purple/Black	Right Rear Speaker -
Green	Left Rear Speaker +
Green/Black	Left Rear Speaker -
Grey	Right Front Speaker +
Grey/Black	Right Front Speaker -
White	Left Front Speaker +
White/Black	Left Front Speaker -

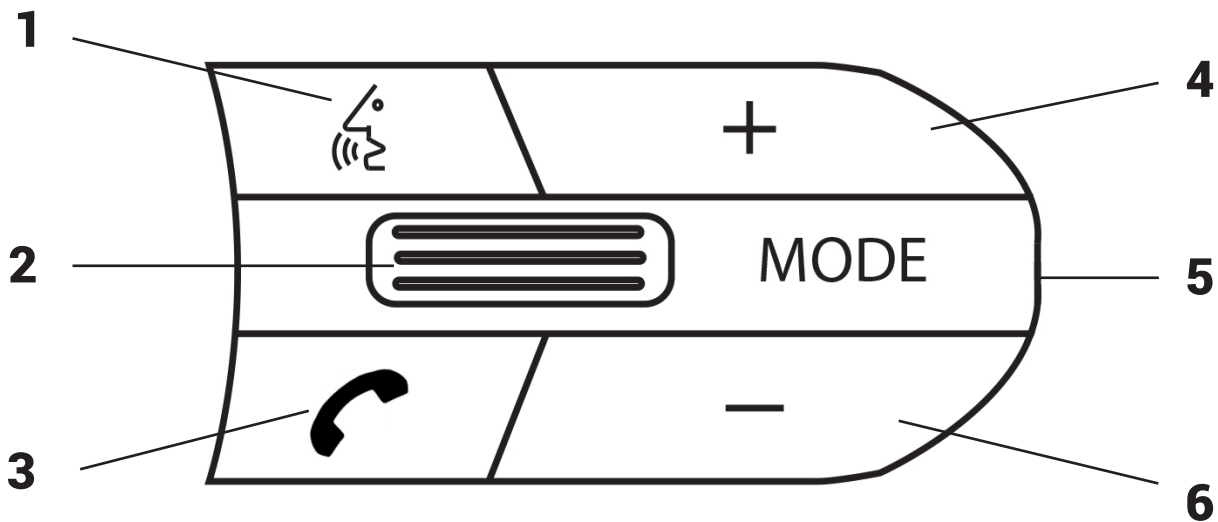
Yellow	Permanent 12V
Black	Ground
Red	Ignition 12V
Orange	Illumination

ADDITIONAL CONNECTIONS

Lt. Green	Park Brake
Pink	Speed Pulse
Purple/White	Reverse Gear
Brown	Mute

STEERING WHEEL CONTROL FUNCTIONALITY

The following diagram, though based on careful research, is an example only. Individual steering wheel control configurations may differ.



1. Voice Command (if head unit supports)
2. Track + / - (Push for Mute)
3. Pick Up (Short Press) Hang Up (Long Press)
4. Volume +
5. Mode / OEM Unit Control*
6. Volume -

Aftermarket Unit Control

If the OEM head unit has been retained during the installation, hold Mode for 8-10 seconds until a chime is heard from the interface speaker. The SWC button will now control the OEM head unit. To revert back to aftermarket unit control, hold Mode for 8-10 seconds.

A stereo connection (patch) lead is also required for the installation of this interface (supplied separately). Please ensure that you have the correct lead before proceeding. For universal patch leads, prepare the wiring loops in accordance with the instruction manual supplied with the product before installation.

PRELIMINARY CONNECTIONS

1. Firstly, connect the male and female ends of the Data Extension Cable to the corresponding male and female molex connectors on the Main Wiring Harness.
2. Connect the Speaker Box to the 2 Pin Molex connector on the main wiring harness.
3. If the vehicle is amplified, connect the MOST Amplifier Interface to the 8 Pin Molex connector on the main wiring loom (CTSMB015.2 only)

CONNECTIONS AT REAR LOCATION (OEM UNIT)

5. Make the following connections at the rear location:

- **12V Permanent Blade Spur** (Connect to a desired 12V power source, for e.g. direct to battery or to an empty 12V permanent bay in fusebox)
- **40 Pin Female Vehicle Specific Connector** (Connect to OEM head unit)
 - **LVDS Extension Cable - Female End** (Connect to OEM head unit)
 - **Ground Fork** (Connect to a desired ground location)

CONNECTIONS AT FRONT LOCATION (AFTERMARKET UNIT)

6. Make the following connections at the front location behind the dashboard:

- Connect the 12 Pin Molex connector from the patch lead to the SWC Interface
- Connect the opposite end of the patch lead to the steering wheel control input on the back of the aftermarket stereo (**NOTE: This may be a 3.5mm jack connector or a wired input depending on the brand of aftermarket stereo being fitted. Please consult the aftermarket stereo installation manual for further information on where to make the connection.**)

IMPORTANT: THIS STEP MUST BE COMPLETED BEFORE CONNECTING POWER TO THE INTERFACE. FAILURE TO DO SO MAY RESULT IN A LACK OF FUNCTIONALITY AND THE NEED TO REINSTALL THE PRODUCT

- Connect the 14 Pin Molex connector from the Main Wiring Harness to the SWC Interface.
- Connect the 16 Pin ISO Connector to the ISO Connector from the aftermarket head unit

NOTE: For aftermarket stereos which do not have an ISO connector, please see "Wiring Key" on Pg.2 for information on which wires to connect. Some interfaces may also have additional 'flying' wires which can be connected to the vehicle to support various features ie. parking brake trigger, reverse gear and speed pulse. Details of these can be found under 'Additional Connections'.

- Connect the 40 Pin Male Vehicle-Specific Connector to the female connector from the vehicle.
- If desired, connect the Ground Blade Spur to a suitable ground point
- Connect the Male LVDS connector to the female OEM LVDS connector behind the dashboard (previously unplugged from the OEM head unit).
- If the vehicle is amplified, connect the Red/White Phono Connectors to the aftermarket head unit for amplifier audio retention

7. Test stereo and steering wheel control functionality for correct operation before reassembling the vehicle dashboard. If steering wheel control functions are unresponsive, please uninstall the interface and wiring and reinstall carefully in accordance with the above steps.

Need help? Visit support.connects2.com/tickets/technical

