



**POWER
FOR THE WAVES
THE PURE MARINE
CERTIFIED PRODUCT**



HEX 6.5 IC-W

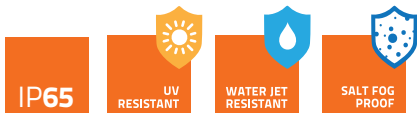
IN-CEILING 6.5" MARINE COAX

Hertz marine In-Ceiling speaker is designed for real marine applications thanks to the sealed design that protects all the speaker's parts from corrosion. The edgeless mesh grille with magnetic locking system is designed to disappear from view ensuring a near stealth in-wall/in-ceiling installation. Crossover filter, built with marine-compliant coated PCB, is fine-tuned for in-wall/in-ceiling applications, providing top audio performance.

marine

PRODUCT NEWS

Elettromedia 2019



POWER FOR THE WAVES
THE PURE MARINE CERTIFIED PRODUCT

100W
 POWER HANDLING

HEX 6.5 IC-W

IN-CEILING 6.5" MARINE COAX



TECHNICAL SPECIFICATIONS

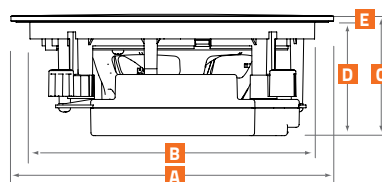
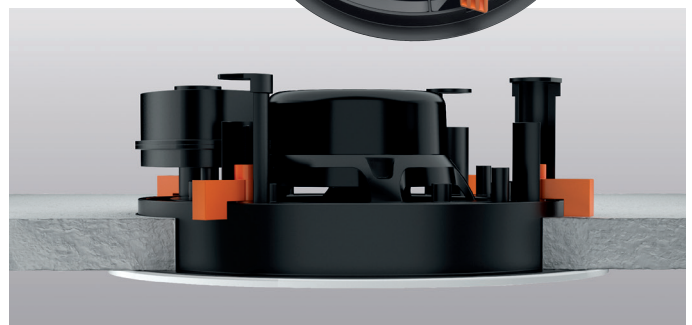
Component	Two way in-ceiling coaxial	
Size		
Woofers	mm (in.)	165 (6.5)
Tweeter diaphragm	mm (in.)	24 (0.9)
Voice Coil Ø		
Woofers	mm (in.)	25 (1)
Tweeter	mm (in.)	20 (0.8)
Power Handling	W peak	100
	W continuous	50
Impedance	Ω	6
Frequency Response	Hz	50 ÷ 22k
Woofers Magnet size D x d x h	mm (in.)	75 x 32 x 15 (2.95 x 1.26 x 0.59)
Tweeter Magnet size D x h	mm (in.)	19 x 3 (0.75 x 0.12)
Weight of one speaker	kg (lb.)	1,75 (3.86)
Woofers Magnet	High density flux ferrite	
Tweeter Magnet	Neodymium	
Cone	Polypropylene with UV inhibitors	
Dome	Tetolon	
Xmech	mm (in.)	±4,8 (0.19)

ELECTRO-ACOUSTIC PARAMETERS

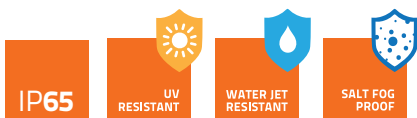
D	mm	125
Xmax	mm	3,4
Re	Ω	5
Fs	Hz	60
Le	mH	0,32
Vas	l	10,48
Mms	g	14,2
Cms	mm/N	0,50
BL	T·m	5,3
Qts		0,81
Qes		0,98
Qms		4,8
Spl	dB	88

1. Hertz Pure Marine Certified Product stamp featuring IP65 protection grade, ASTM-D4329 standards for UV resistance and ASTM-B117 for salt fog operability.
2. Totally sealed design including coated crossover filter made by marine-grade PCB to prevent corrosion against salt fog.
3. Edgeless mesh grille with magnetic locking system providing near stealth in-wall/in-ceiling installation.
4. Crossover fine-tuned to optimize sound emission for in-wall/in-ceiling applications.
5. Marine certified 24 mm diaphragm soft dome tweeter designed with FEM simulation to maximize sound projection for in-wall and in-ceiling installation.
6. 25 mm (1") voice coil woofer with 6 Ω impedance, optimized to be driven by any amplifiers system (12 volts, 24 volts, rack amps, ...).
7. Silicone insulated lead wires for extended durability in outdoor application.
8. Fast and easy installation thanks to the robust hooking system.

Totally sealed electronics to prevent corrosion against salt fog.



A	231 mm	9.08 in.
B	203,5 mm	8.01 in.
C	87 mm	3.43 in.
D	81 mm	3.2 in.
E	6 mm	0.23 in.



From R&D to final product
KLIPPEL
 since 2005

Technology / Art - Sound
 Manufactured by
elettromedia